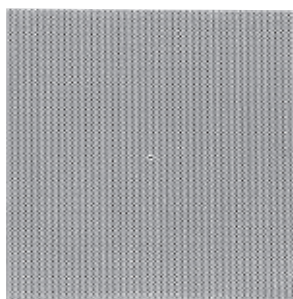


PERFORATED PANEL ONLY

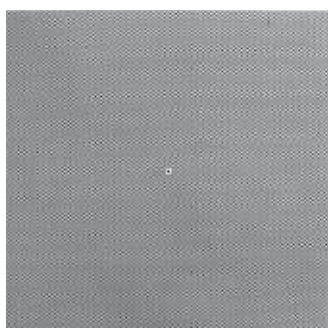
- Fits standard T-Bar ceiling
- For ceiling plenum return applications
- White finish



03612424CW

EXPANDED PANEL ONLY

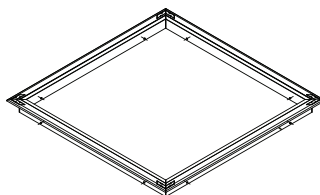
- Fits standard T-Bar ceiling
- For ceiling plenum return applications
- White finish



03602424CW

T-BAR FRAME FOR PLASTER

This rugged frame allows for easy installation of T-Bar Lay-Ins or Diffusers to a plaster ceiling.



07392424CW

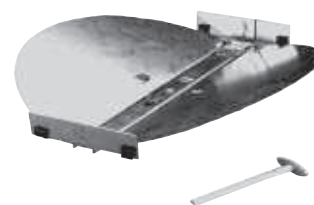
1/4" FIBERGLASS PLENUM ONLY



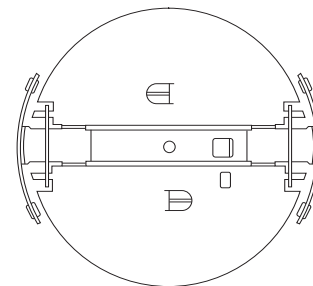
03750753

ROUND CEILING DAMPER

- Use plastic "T" handle for easy adjustment
- Easily mounts in T-Bar diffuser with round neck

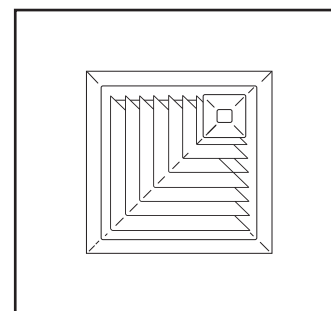


800-D0



FILLER PANEL

- All aluminum construction
- Fits 24" x 24" exposed T-Bar ceiling system. Can be factory mounted with most models of surface mount grilles and registers.
- White or brown baked on finish



09022424AL

09022424CW

Picture shows E 1050-C installed in filler panel

