



Contractor Advantage Flush Valve Option Kit

Plumbing Products Designed to Reduce Costs

Why spend money on parts you don't need? The new Zurn Contractor Advantage Option Kit reduces material cost and increases job profitability. The Contractor Advantage -CA suffix option can be added to any flush valve allowing orders for only the parts you really need, making this the ideal solution for retrofit projects.

The "-CA" suffix is a complete flush valve kit without the additional parts listed below:

- supply stop
- sweat solder kit
- supply pipe cover tube
- wall escutcheon
- supply stop vandal resistant cover*

Note: the vandal resistant cover savings only applies to AV and PL valves only, AF valves do not come with these caps.

Example Savings:

Z6000AV-WS1 (List Price - \$195.65)

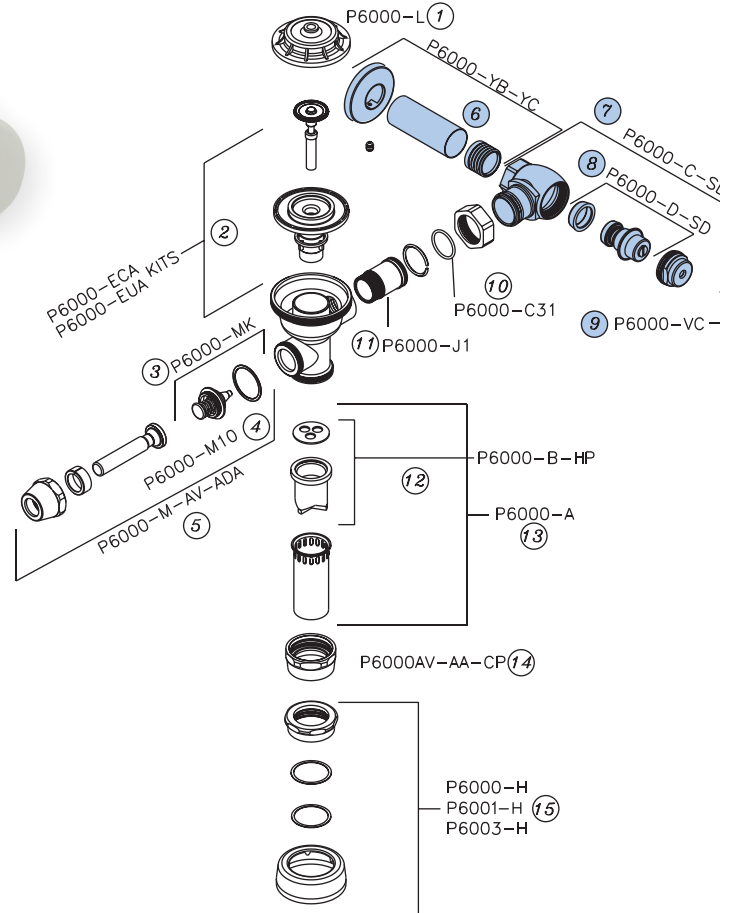
Z6000AV-WS1-**CA** (List Price - \$184.80)

Simply ask your wholesaler to add the -CA suffix to the flush valve model and save!



1-855-ONE-ZURN
www.zurn.com

Contractor Advantage Flush Valve Option Kit



Description	Product No.
1 Inside Plastic Cover	P6000-L
Closet Repair Kit - 1.28 gpf	P6000-ECA-HET
2 Closet Repair Kit - 3.5 gpf	P6000-ECA-WS
Closet Repair Kit - 1.6 gpf	P6000-ECA-WS1
Closet Repair Kit - 2.4 gpf	P6000-ECA-PWS
Urinal Repair Kit - 0.125 gpf	P6000-EUA-ULF
Urinal Repair Kit - 1.5 gpf	P6000-EUA-WS
Urinal Repair Kit - 1.0 gpf	P6000-EUA-WS1
Urinal Repair Kit - 0.5 gpf	P6000-EUA-EWS
3 Handle Repair Kit	P6000-MK
4 Handle Gasket	P6000-M10
5 Handle Assembly - ADA	P6000-M-AV-ADA

*Please note, the parts highlighted in blue are not included

Description	Product No.
6 1" Sweat Solder Kit w/Cast Wall Flange	P6000-YBYC
3/4" Sweat Solder Kit w/Cast Wall Flange	P6003-YBYC
7 Control Stop - 1" Closet	P6000-C-SD-CP
Control Stop - 3/4" Urinal	P6003-C-SD-CP
8 Stop Valve Repair Kit - 1" and 3/4"	P6000-D-SD
9 Vandal-Resistant Stop Cover	P6000-VC
10 Tail Piece O-Ring	P6000-C31
11 Tailpiece Assembly	P6000-J1
12 High Pressure Vacuum Breaker Repair Kit	P6000-B-HP
13 Flush Tube Assembly for Flush Valves Specify diameter and length.	P6000-A
14 Vacuum Breaker Nut/Coupling - CP	P6000-AA-CP
15 Spud Coupling Assembly	P6000-H - 1-1/2" P6001-H - 1-1/4" P6003-H - 3/4"