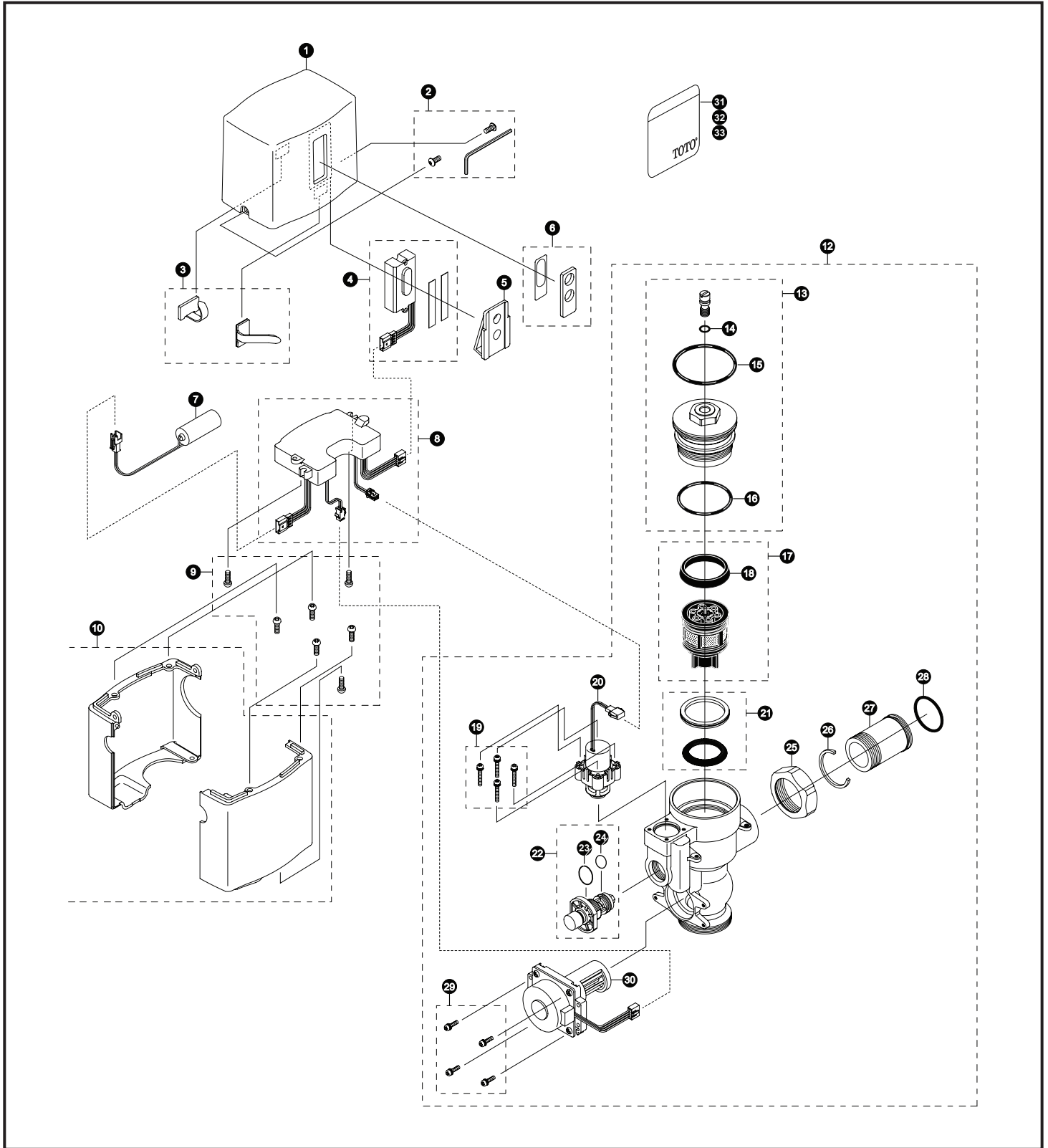


TEU1LN12#CP
TEU1LN22#CP
TEU1LN#CP

EcoPower® Sensor High Efficiency Urinal Flush Valve Exposed - 0.5 Gpf Hydro-Power Charge



TEU1LN12#CP
 TEU1LN22#CP
 TEU1LN#CP

**EcoPower® Sensor High Efficiency Urinal Flush Valve
 Exposed - 0.5 Gpf
 Hydro-Power Charge**

Item	Part	Description
1	TH559EDV511	Top Cover
2	THU3051	Set Screw & Allen Wrench Set
3	TH559EDV517	Clamp Set
4	TH559EDV536	Sensor Controller & Packing Set (0.5 Gpf only)
5	TH559EDV516	Holder
6	TH559EDV514	Glass & Packing Set
7	THP3053	Back-Up Battery
8	TH559EDV519	Controller (Urinal)
9	TH559EDV513	M4 Screws (5 pieces)
10	TH559EDV512	Lower Cover Set
11	[Removed]	
12	TH559EDV502	Valve Body For Exposed (Urinal 1.0/0.5 GPF)
13	TH559EDV508	Valve Cap Assy (Toilet 3.5 GPF)(Urinal 1.0/0.5 GPF)
14	TH305SV111	O-Rings (Cap Screw)(10 Pieces)
15	TH305SV120	O-Rings (Valve Cap)(10 Pieces)
16	TH305SV112	O-Rings (Valve Guide)(10 Pieces)
17	TH323V104R	Piston Assembly (1.0/0.5 - 3.5 GPF)
18	TH305SV103	U-Packing (For Piston)(10 Pieces)
19	TH559EDV301	Double Sems Screws M3 (4 pieces)
20	TH559EDV510	Solenoid Unit & Diaphragm Assy
21	TH321	Seal Washer Kit
22	TH559EDV506	Manual Flushing Button
23	THP3013	O-ring, cap (10/bag)
24	THP3242	O-ring (1/bag)
25	TH305SV113	Nut
26	TH305SV105	Locking Rings (10 Pieces)
27	TH305SV114	Tail Piece
28	TH305SV106	O-Rings (Tail Piece)(10 Pieces)
29	TH559EDV505	Double Sems Screws M3 (4 pieces)
30	TH559EDV504	Hydro-Power Generator (Urinal)
31	0EU5161	0.5 GPF Water Saving Sticker (English)
32	0EU3018	0.5 GPF Water Saving Sticker (Spanish)
33	0EU3016	0.5 GPF Water Saving Sticker (French)

Vacuum Breaker Sets

- VB9CP-12 Exposed - Top Spud (3/4" Outlet)
- VB9CP-22 Exposed - Top Spud (1-1/4" Outlet)

Note: For additional information, refer to the individual vacuum breaker parts sheet.

Product Number Explanations

Flush Valve

- (T) Fitting
- (E) Electronic
- (U) Urinal 0.5 Gpf
- (1) Exposed
- (L) HET/HEU Dynamo (Hydro Generator)
- (N) Neutral Rough-In
- (1) 3/4" Outlet
- (2) Top Spud
- (#CP) Chrome Finish

Flush Valve

- (T) Fitting
- (E) Electronic
- (U) Urinal 0.5 Gpf
- (1) Exposed
- (L) HET/HEU Dynamo (Hydro Generator)
- (N) Neutral Rough-In
- (2) 1-1/4" Outlet
- (2) Top Spud
- (#CP) Chrome Finish