



# RA14

Parts List  
30-September-2017



*This parts list is current as of the above revision date.  
See <http://www.rheempartslists.net/92-42800-RA14.pdf> for the current revision.*

Condensing Units

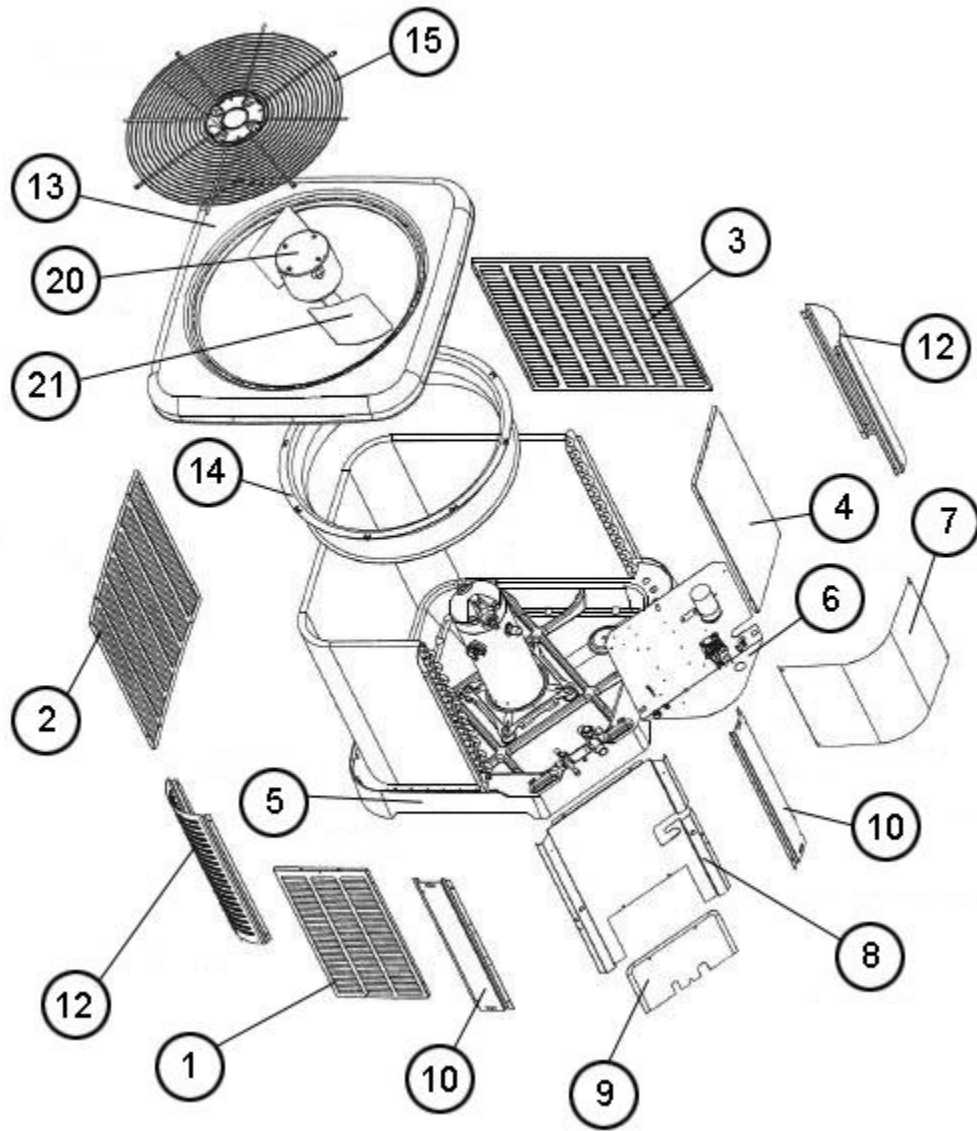
No.	Notes	MODEL COOLING CAPACITY VARIATION	RA14 18 AJ1NA/B	RA14 24 AJ1NA/B	RA14 30 AJ1NA/B	RA14 36 AC1NB	RA14 36 AJ1NA/B	RA14 42 AC1NB
<b>ELECTRICAL/FAN GROUP</b>								
20	Stk	Fan Motor (before W1017)	51-101774-21	51-101774-23	51-101774-22	51-101774-02	51-101774-02	51-102008-07
20	Stk	Fan Motor (on or after W1017)	51-101774-21	51-101774-23	51-101774-22	51-101774-52	51-101774-52	51-101774-52
21	Stk	Fan Blade	70-101323-24	70-101323-37	70-101323-25	70-102011-12	70-102011-12	70-101323-27
22	Stk	Contacto	42-102664-05	42-102664-05	42-102664-05	42-102664-14	42-102664-05	42-102664-14
23		Capacitor	See Compressor Group					
23a		Capacitor Strap	AE-104562-01	AE-104562-01	AE-104562-01	AE-104562-01	AE-104562-01	AE-104562-01
25		Crankcase Heater	See Compressor Group					
26		Grounding Lug	45-19000-01	45-19000-01	45-19000-01	45-19000-01	45-19000-01	45-19000-01
		Low Ambient Control	See Accessories Group					
27	Stk	Low Pressure Control (Design Series 'B')	47-103670-08	47-103670-08	47-103670-08	47-103670-08	47-103670-08	47-103670-08
27a		Valve Body - Low Pressure Control	61-18542-01	61-18542-01	61-18542-01	61-18542-01	61-18542-01	61-18542-01
28	Stk	High Pressure Control (Design Series 'B')	47-102290-01	47-102290-01	47-102290-01	47-102290-01	47-102290-01	47-102290-01

No.	Notes	MODEL COOLING CAPACITY VARIATION	RA14 42 AJ1NA/B	RA14 48 AC1NB	RA14 48 AJ1NA/B	RA14 60 AC1NB	RA14 60 AJ1NA/B	
<b>ELECTRICAL/FAN GROUP</b>								
20	Stk	Fan Motor (before W1017)	51-102008-07	51-102008-07	51-102008-07	51-101774-12	51-101774-12	
20	Stk	Fan Motor (on or after W1017)	51-102008-34	51-101774-51	51-101774-51	51-101774-12	51-101774-12	
21	Stk	Fan Blade	70-101323-27	70-101323-27	70-101323-27	70-101323-28	70-101323-28	
22	Stk	Contacto	42-102664-05	42-102664-14	42-102664-10	42-102664-14	42-102664-10	
23		Capacitor	See Compressor Group					
23a		Capacitor Strap	AE-104562-01	AE-104562-01	AE-104562-01	AE-104562-01	AE-104562-01	
25		Crankcase Heater	See Accessories Group					
26		Grounding Lug	45-19000-01	45-19000-01	45-19000-01	45-19000-01	45-19000-01	
		Low Ambient Control	See Accessories Group					
27	Stk	Low Pressure Control (Design Series 'B')	47-103670-08	47-103670-08	47-103670-08	47-103670-08	47-103670-08	
27a		Valve Body - Low Pressure Control	61-18542-01	61-18542-01	61-18542-01	61-18542-01	61-18542-01	
28	Stk	High Pressure Control (Design Series 'B')	47-102290-01	47-102290-01	47-102290-01	47-102290-01	47-102290-01	

No.	Notes	MODEL COOLING CAPACITY VARIATION	RA14 36 AD1NB	RA14 42 AD1NB	RA14 48 AD1NB	RA14 60 AD1NB		
<b>ELECTRICAL/FAN GROUP</b>								
20	Stk	Fan Motor (Three-phase) - See Note 1	51-102008-24	N/A	51-102008-28	N/A		
20	Stk	Fan Motor (Single-phase) - See Note 1	51-101774-06	51-101774-38	51-101774-38	51-101774-34		
21	Stk	Fan Blade (Three-phase Motor) - See Note 1	70-102011-12	N/A	70-101323-27	N/A		
21	Stk	Fan Blade (Single-phase Motor) - See Note 1	70-102011-09	70-101323-27	70-101323-27	70-101323-28		
22	Stk	Contacto	42-102664-14	42-102664-14	42-102664-10	42-102664-14		
23		Capacitor - Fan (Single-phase Motor) - See Note 1	43-101666-65	43-101666-65	43-101666-65	43-101666-65		
23a		Capacitor Strap	AE-104562-01	AE-104562-01	AE-104562-01	AE-104562-01		
25		Crankcase Heater	See Accessories Group					
26		Grounding Lug	45-19000-01	45-19000-01	45-19000-01	45-19000-01		
		Low Ambient Control	See Accessories Group					
27	Stk	Low Pressure Control (Design Series 'B')	47-103670-08	47-103670-08	47-103670-08	47-103670-08		
27a		Valve Body - Low Pressure Control	61-18542-01	61-18542-01	61-18542-01	61-18542-01		
28	Stk	High Pressure Control (Design Series 'B')	47-102290-01	47-102290-01	47-102290-01	47-102290-01		

No.	Notes	MODEL COOLING CAPACITY VARIATION	RA14 18 WJ1NA/B	RA14 24 WJ1NA/B	RA14 30 WJ1NA/B	RA14 36 WC1NB	RA14 36 WJ1NA/B	RA14 42 WC1NB
<b>ELECTRICAL/FAN GROUP</b>								
20	Stk	Fan Motor (before W1017)	51-101774-21	51-101774-23	51-102008-17	51-102008-20	51-102008-20	51-102008-25
20	Stk	Fan Motor (on or after W1017)	51-101774-21	51-101774-23	51-102008-17	51-101774-52	51-101774-52	51-101774-51
21	Stk	Fan Blade	70-101323-24	70-101323-37	70-101323-25	70-102011-12	70-102011-12	70-101323-30
22	Stk	Contacto	42-102664-05	42-102664-05	42-102664-05	42-102664-14	42-102664-05	42-102664-14
23		Capacitor	See Compressor Group					
23a		Capacitor Strap	AE-104562-01	AE-104562-01	AE-104562-01	AE-104562-01	AE-104562-01	AE-104562-01
25		Crankcase Heater	See Compressor Group					
26		Grounding Lug	45-19000-01	45-19000-01	45-19000-01	45-19000-01	45-19000-01	45-19000-01
		Low Ambient Control	See Accessories Group					
27	Stk	Low Pressure Control (Design Series 'B')	47-103670-08	47-103670-08	47-103670-08	47-103670-08	47-103670-08	47-103670-08
27a		Valve Body - Low Pressure Control	61-18542-01	61-18542-01	61-18542-01	61-18542-01	61-18542-01	61-18542-01
28	Stk	High Pressure Control (Design Series 'B')	47-102290-01	47-102290-01	47-102290-01	47-102290-01	47-102290-01	47-102290-01

No.	Notes	MODEL COOLING CAPACITY VARIATION	RA14 42 WJ1NA/B					
<b>ELECTRICAL/FAN GROUP</b>								
20	Stk	Fan Motor (before W1017)	51-102008-25					
20	Stk	Fan Motor (on or after W1017)	51-101774-51					
21	Stk	Fan Blade	70-101323-30					
22	Stk	Contacto	42-102664-05					
23		Capacitor	See Compressor Group					
23a		Capacitor Strap	AE-104562-01					
25		Crankcase Heater	See Compressor Group					
26		Grounding Lug	45-19000-01					
		Low Ambient Control	See Accessories Group					
27	Stk	Low Pressure Control (Design Series 'B')	47-103670-08					
27a		Valve Body - Low Pressure Control	61-18542-01					
28	Stk	High Pressure Control (Design Series 'B')	47-102290-01					



Exploded View