



# RA14

Parts List  
30-September-2017



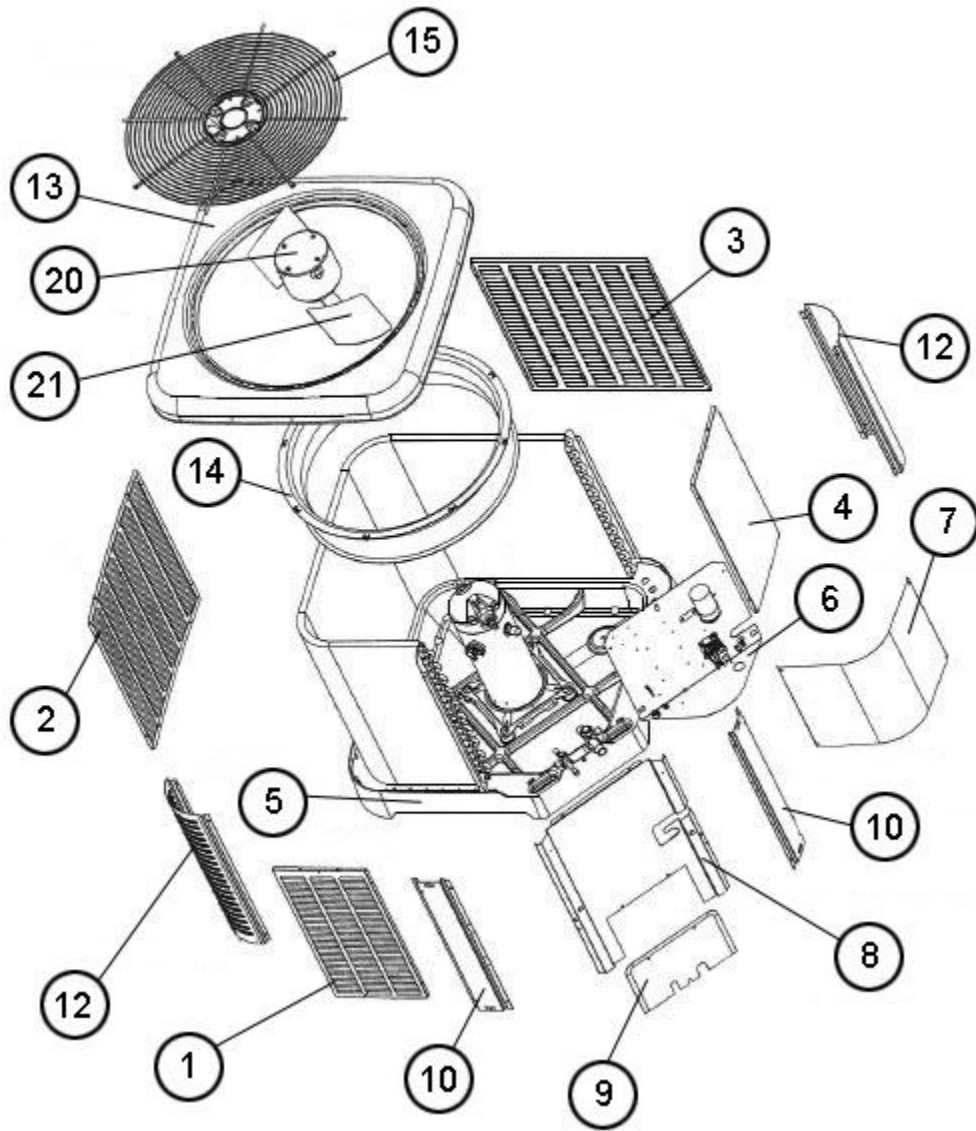
*This parts list is current as of the above revision date.  
See <http://www.rheempartslists.net/92-42800-RA14.pdf> for the current revision.*

Condensing Units

No.	Notes	MODEL COOLING CAPACITY VARIATION	RA14 18 WJ1NA/B	RA14 24 WJ1NA/B	RA14 30 WJ1NA/B	RA14 36 WC1NB	RA14 36 WJ1NA/B	RA14 42 WC1NB
<b>SHEET METAL PARTS, MISCELLANEOUS</b>								
1		Front Panel	AE-104456-01	AE-104456-07	AE-104456-15	AE-104456-22	AE-104456-22	AE-104456-25
2		Left Panel (Badge Panel)	AE-104456-12	AE-104456-09	AE-104456-17	AE-104456-24	AE-104456-24	AE-104456-41
3		Back Panel	AE-104456-02	AE-104456-08	AE-104456-16	AE-104456-23	AE-104456-23	AE-104456-26
4		Right Panel	AE-104456-13	AE-104456-07	AE-104456-15	AE-104456-22	AE-104456-22	AE-104456-25
5		Base Pan	68-104457-01	68-104457-01	68-104457-01	68-104457-02	68-104457-02	68-104457-02
6		Control Box - Before W1017	AE-104461-01	AE-104461-01	AE-104461-01	AE-104461-01	AE-104461-01	AE-104461-01
6		Control Box - On or After W1017	AE-104461-05	AE-104461-05	AE-104461-05	AE-104461-05	AE-104461-05	AE-104461-05
7		Control Box Cover	AS-104462-01H	AS-104462-01H	AS-104462-01H	AS-104462-01H	AS-104462-01H	AS-104462-01H
8		Control Box Bracket	AS-104460-02H	AS-104460-01H	AS-104460-03H	AS-104460-03H	AS-104460-03H	AS-104460-04H
9		Service Door	AS-104525-01H	AS-104525-01H	AS-104525-01H	AS-104525-01H	AS-104525-01H	AS-104525-01H
10		Center Post (2)	AS-104459-03H	AS-104459-01H	AS-104459-05H	AS-104459-05H	AS-104459-05H	AS-104459-07H
12		Corner Post - Solid	AS-104469-09H (2)	N/A	N/A	N/A	N/A	N/A
12		Corner Post - Louvered	AS-104469-02H (1)	AS-104469-01H (3)	AS-104469-03H (3)	AS-104469-03H (3)	AS-104469-03H (3)	AS-104469-04H (3)
13		Top Panel	AS-104458-01H	AS-104458-01H	AS-104458-01H	AS-104458-02H	AS-104458-02H	AS-104458-02H
14		Venturi	68-104464-02	68-104464-02	68-104464-02	68-104464-04	68-104464-04	68-104464-04
15		Grille	95-104620-01	95-104620-01	95-104620-01	95-104620-02	95-104620-02	95-104620-02
		Center Cap - Blank (for Grille)	91-105471-01	91-105471-01	91-105471-01	91-105471-01	91-105471-01	91-105471-01
		Service Valve - Suction	See Coil Group					
		Service Valve - Liquid	See Coil Group					
		Touch-up Paint - Granite/Steel Gray (Aerosol)	PD523018	PD523018	PD523018	PD523018	PD523018	PD523018
		Touch-up Paint - Granite/Steel Gray (Paint Pens)	PD523019	PD523019	PD523019	PD523019	PD523019	PD523019

No.	Notes	MODEL COOLING CAPACITY VARIATION	RA14 42 WJ1NA/B					
<b>SHEET METAL PARTS, MISCELLANEOUS</b>								
1		Front Panel	AE-104456-25					
2		Left Panel (Badge Panel)	AE-104456-41					
3		Back Panel	AE-104456-26					
4		Right Panel	AE-104456-25					
5		Base Pan	68-104457-02					
6		Control Box - Before W1017	AE-104461-01					
6		Control Box - On or After W1017	AE-104461-05					
7		Control Box Cover	AS-104462-01H					
8		Control Box Bracket	AS-104460-04H					
9		Service Door	AS-104525-01H					
10		Center Post (2)	AS-104459-07H					
12		Corner Post - Solid	N/A					
12		Corner Post - Louvered	AS-104469-04H (3)					
13		Top Panel	AS-104458-02H					
14		Venturi	68-104464-04					
15		Grille	95-104620-02					
		Center Cap - Blank (for Grille)	91-105471-01					
		Service Valve - Suction	See Coil Group					
		Service Valve - Liquid	See Coil Group					
		Touch-up Paint - Granite/Steel Gray (Aerosol)	PD523018					
		Touch-up Paint - Granite/Steel Gray (Paint Pens)	PD523019					

No.	Notes	MODEL COOLING CAPACITY VARIATION	RA14 42 BC1NB	RA14 42 BJ1NA	RA14 42 BJ1NB
<b>ELECTRICAL/FAN GROUP</b>					
20	Stk	Fan Motor	51-104691-04	51-104691-04	51-104691-04
21	Stk	Fan Blade	70-102011-09	70-102011-09	70-102011-09
22	Stk	Contactora	42-102664-14	42-102664-05	42-102664-05
23		Capacitor	See Compressor Group		
23a		Capacitor Strap	AE-104562-01	AE-104562-01	AE-104562-01
25		Crankcase Heater	See Accessories Group		
26		Grounding Lug	45-19000-01	45-19000-01	45-19000-01
		Low Ambient Control	See Accessories Group		
27	Stk	Low Pressure Control (Design Series 'B')	47-103670-08	N/A	47-103670-08
27a		Valve Body - Low Pressure Control	61-18542-01	61-18542-01	61-18542-01
28	Stk	High Pressure Control (Design Series 'B')	47-102290-01	N/A	47-102290-01



Exploded View