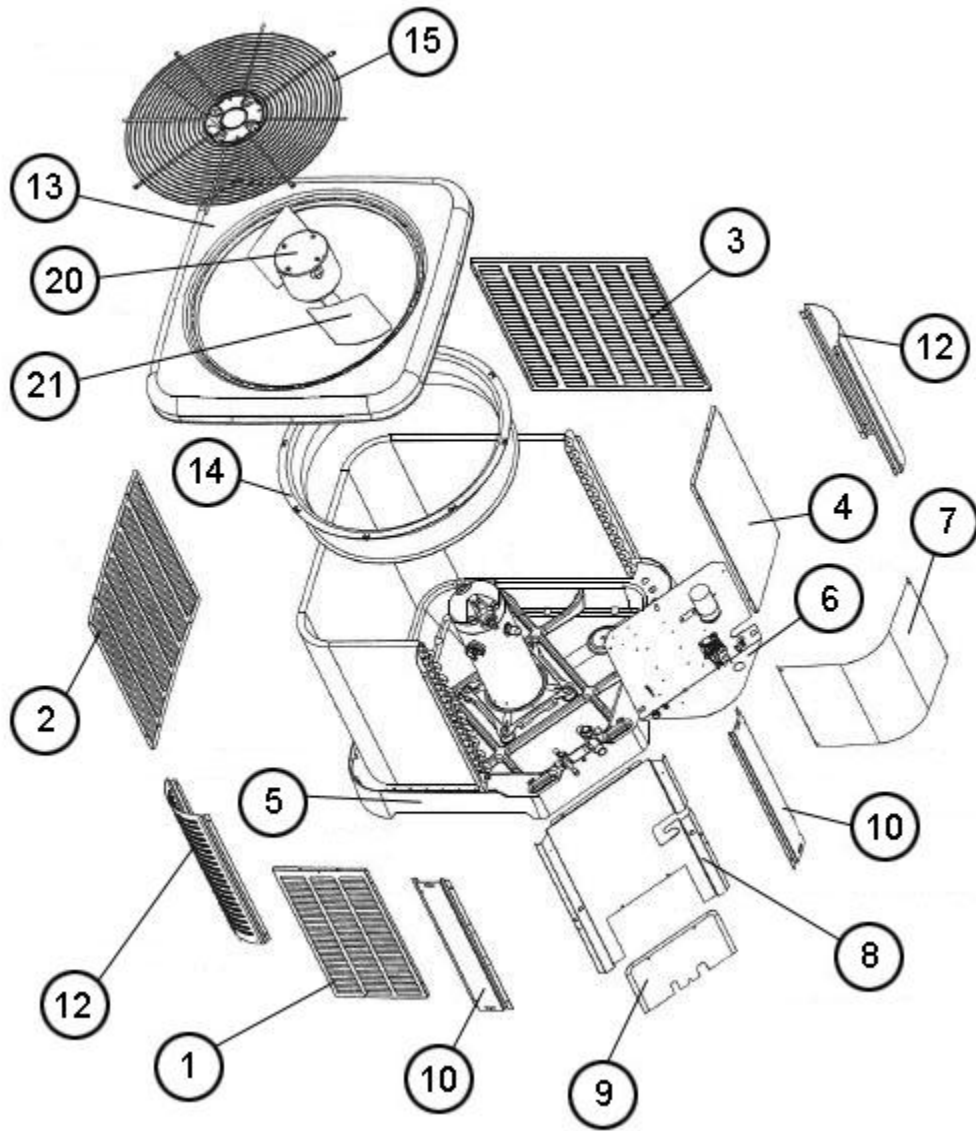


No.	Notes	MODEL COOLING CAPACITY VARIATION	RP14	RP14	RP14	RP14	RP14	RP14	
			18 AJ1NA	18 BJ1NA	24 AJ1NA	30 AJ1NA	36 AJ1NA	42 AJ1NA	
<b>ELECTRICAL/FAN GROUP</b>									
20	Stk	Fan Motor - Before W1017	51-101774-23	51-102008-18	51-101774-23	51-101774-23	51-101774-02	51-101774-31	
20	Stk	Fan Motor - On or after W1017	51-101774-23	51-102008-18	51-101774-23	51-101774-23	51-101774-52	51-101774-31	
21	Stk	Fan Blade	70-101323-26	70-101323-26	70-101323-26	70-101323-32	70-102011-12	70-102011-12	
22	Stk	Contactactor	42-102664-05	42-102664-05	42-102664-05	42-102664-05	42-102664-05	42-102664-05	
23		Capacitor	See Compressor Group						
		Start Capacitor	See Compressor Group						
		Start Relay	See Compressor Group						
23a		Capacitor Strap	AE-104562-01	AE-104562-01	AE-104562-01	AE-104562-01	AE-104562-01	AE-104562-01	
24	Stk	Defrost Control Board	47-102685-07	47-102685-07	47-102685-07	47-102685-07	47-102685-07	47-102685-07	
25		Crankcase Heater	See Compressor Group						
26		Grounding Lug	45-19000-01	45-19000-01	45-19000-01	45-19000-01	45-19000-01	45-19000-01	
		Low Ambient Control	See Accessories Group						
		Low Ambient Sensor	47-102709-01	47-102709-01	47-102709-01	47-102709-01	47-102709-01	47-102709-01	
27	Stk	Low Pressure Control	47-103670-05	47-103670-05	47-103670-05	47-103670-05	47-103670-05	47-103670-05	
27a		Valve Body - Low Pressure Control	61-18542-01	61-18542-01	61-18542-01	61-18542-01	61-18542-01	61-18542-01	
28	Stk	High Pressure Control	47-103669-01	47-103669-01	47-103669-01	47-103669-01	47-103669-01	47-103669-01	

No.	Notes	MODEL COOLING CAPACITY VARIATION	RP14	RP14	RP14	RP14	RP14	RP14	
			48 AJ1NA	60 AJ1NA	18 FJ1NA	24 FJ1NA	30 FJ1NA	36 FJ1NA	
<b>ELECTRICAL/FAN GROUP</b>									
20	Stk	Fan Motor - Before W1017	51-102008-07	51-101774-12	51-102008-18	51-102008-17	51-101774-32	51-102728-11	
20	Stk	Fan Motor - On or after W1017	51-101774-51	51-101774-12	51-102008-18	51-102008-17	51-101774-32	51-102728-23	
21	Stk	Fan Blade	70-101323-30	70-101323-29	70-101323-26	70-101323-33	70-101323-35	70-101323-41	
22	Stk	Contactactor	42-102664-10	42-102664-10	42-102664-05	42-102664-05	42-102664-05	42-102664-05	
23		Capacitor	See Compressor Group						
		Start Capacitor	See Compressor Group						
		Start Relay	See Compressor Group						
23a		Capacitor Strap	AE-104562-01	AE-104562-01	AE-104562-01	AE-104562-01	AE-104562-01	AE-104562-01	
24	Stk	Defrost Control Board	47-102685-07	47-102685-07	47-102685-07	47-102685-07	47-102685-07	47-102685-07	
25		Crankcase Heater	See Compressor Group						
26		Grounding Lug	45-19000-01	45-19000-01	45-19000-01	45-19000-01	45-19000-01	45-19000-01	
		Low Ambient Control	See Accessories Group						
		Low Ambient Sensor	47-102709-01	47-102709-01	47-102709-01	47-102709-01	47-102709-01	47-102709-01	
27	Stk	Low Pressure Control	47-103670-05	47-103670-05	47-103670-05	47-103670-05	47-103670-05	47-103670-05	
27a		Valve Body - Low Pressure Control	61-18542-01	61-18542-01	61-18542-01	61-18542-01	61-18542-01	61-18542-01	
28	Stk	High Pressure Control	47-103669-01	47-103669-01	47-103669-01	47-103669-01	47-103669-01	47-103669-01	

No.	Notes	MODEL COOLING CAPACITY VARIATION	RP14	RP14	RP14				
			42 FJ1NA	48 FJ1NA	60 FJ1NA				
<b>ELECTRICAL/FAN GROUP</b>									
20	Stk	Fan Motor - Before W1017	51-101774-32	51-102728-13	51-102008-07				
20	Stk	Fan Motor - On or after W1017	51-101774-32	51-102728-24	51-101774-51				
21	Stk	Fan Blade	70-101323-34	70-101323-29	70-101323-34				
22	Stk	Contactactor	42-102664-05	42-102664-10	42-102664-10				
23		Capacitor	See Compressor Group						
		Start Capacitor	See Compressor Group						
		Start Relay	See Compressor Group						
23a		Capacitor Strap	AE-104562-01	AE-104562-01	AE-104562-01				
24	Stk	Defrost Control Board	47-102685-07	47-102685-07	47-102685-07				
25		Crankcase Heater	See Compressor Group						
26		Grounding Lug	45-19000-01	45-19000-01	45-19000-01				
		Low Ambient Control	See Accessories Group						
		Low Ambient Sensor	47-102709-01	47-102709-01	47-102709-01				
27	Stk	Low Pressure Control	47-103670-05	47-103670-05	47-103670-10				
27a		Valve Body - Low Pressure Control	61-18542-01	61-18542-01	61-18542-01				
28	Stk	High Pressure Control	47-103669-01	47-103669-01	47-103669-01				



Exploded View