

CHICAGO FAUCETS
a Geberit company

2100 South Clearwater Drive
Des Plaines, IL 60018
Phone: 847-803-5000
Fax: 847-803-5454
www.chicagofaucets.com

REPAIR PARTS

BY: SID DATE: 01-09-08
CHK: *[Signature]* REV: 08-17-12

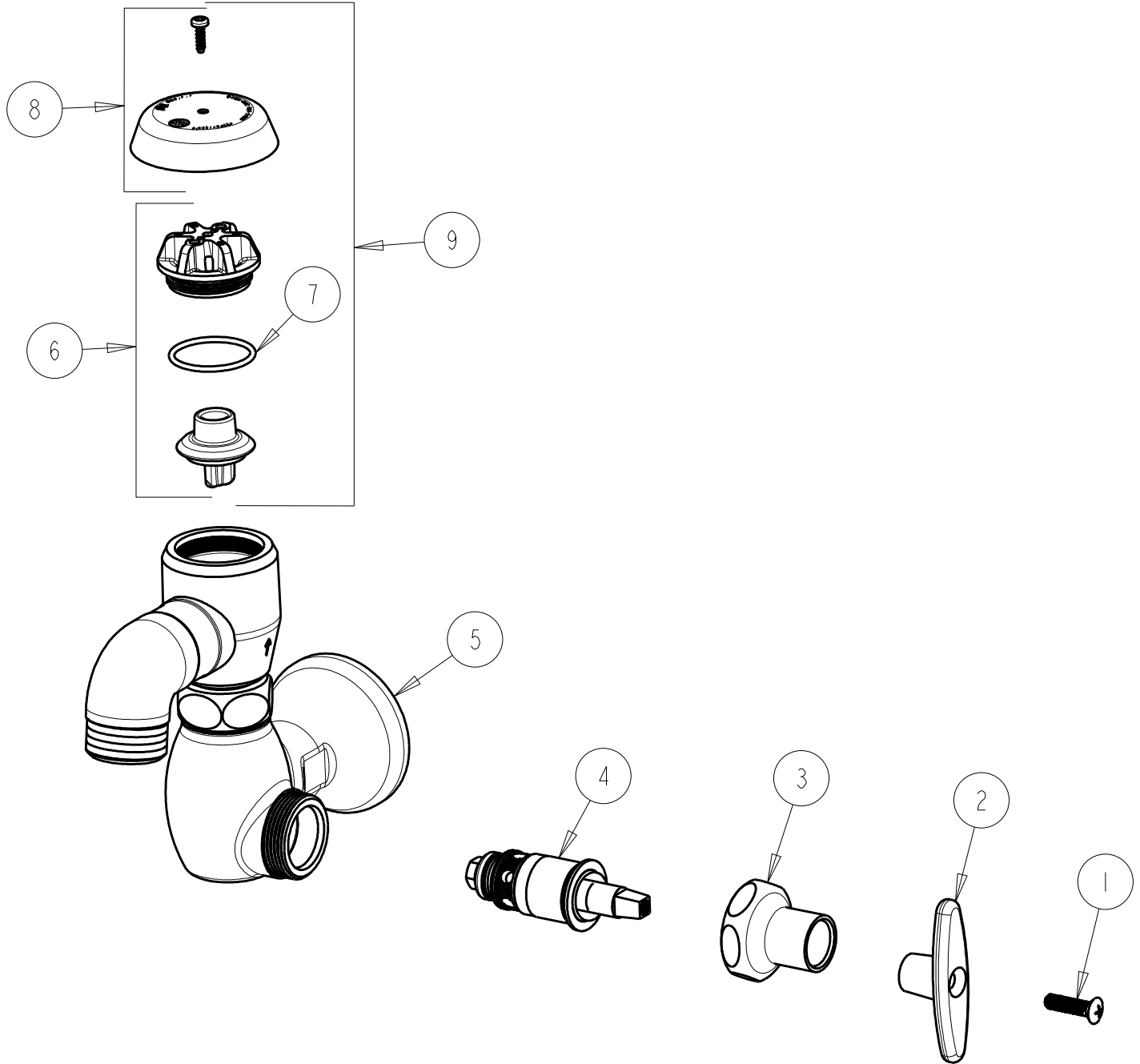
FITTING NO.

952-CP

SUBMITTED MODEL NO.

ITEM NO.

FOR TECHNICAL ASSISTANCE
1-800-TEC-TRUE (1-800-832-8783)



ITEM	PART NO.	DESCRIPTION
1	250-093JKRCF	SCREW
2	293-006JKRCF	TEE HANDLE (INCLUDES SCREW)
3	1-246JKCP	NUT, CAP LOOSE KEY 1-1/8-18 UNEF
4	217-XTLHJKNF	CARTRIDGE, SLO-COMPRESSION (LH)
5	---	VALVE BODY (NOT SOLD SEPARATELY)
6	892-302KJKNF	VACUUM BREAKER REPAIR KIT
7	80-007JKNF	O RING 0.989 X .070
8	892-254JKCP	VACUUM BREAKER COVER w/SCREW
9	892-402KJKNF	KIT, VACUUM BREAKER ASSEMBLY